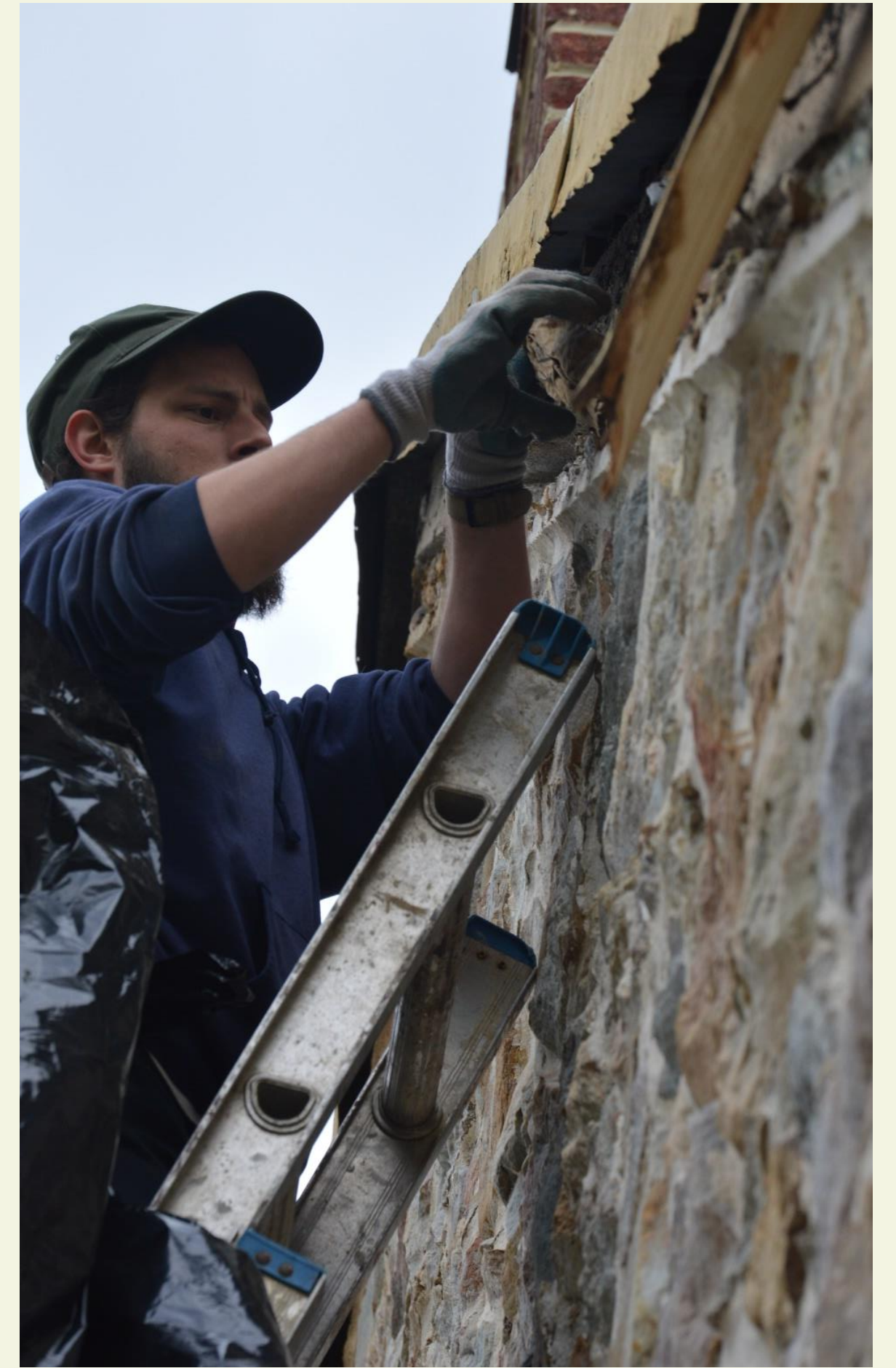
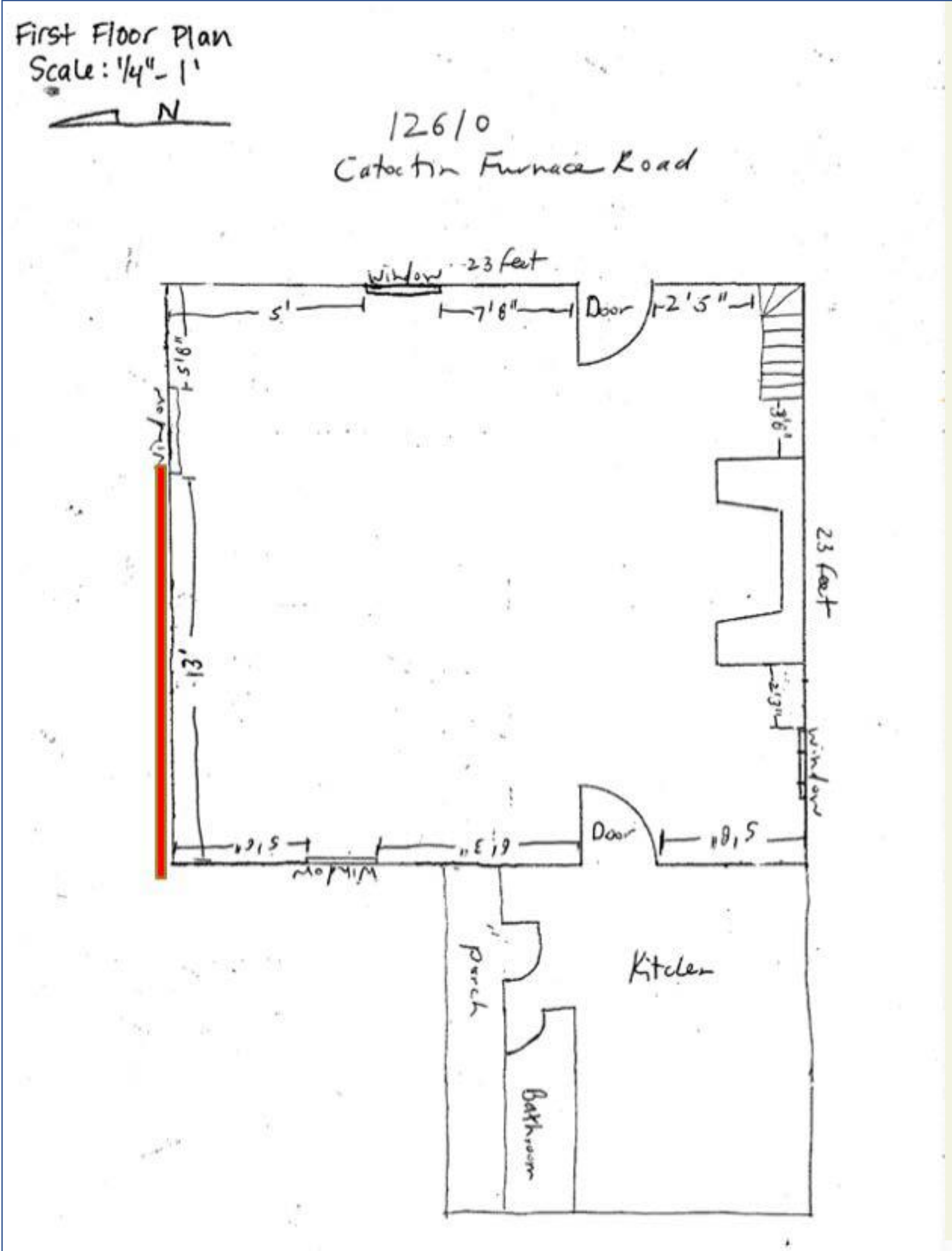


CLOTHING AT CATOCTIN

The recovery of *in-situ* clothing at Catoctin Furnace gives us the unique opportunity to study how workers interacted with clothing, and its various repurposing and parallels to clothing worn by known individuals allows us to experience the lives of those at the Furnace.



Clothing at Catoctin

During the excavation of the Forgemans' House at Catoctin Furnace, nearly a hundred pieces of historic clothing were discovered under a layer of whitewash in between the roof and walls of the attic. The clothing recovered from the walls ranges from the Civil War period to the early 20th century, and shows us what working men and women and their children wore at Catoctin. This collection provides us with a remarkable glimpse into the past, as worker's clothing is rarely preserved in the historic record. We invite you to explore the ways in which workers lived and used their clothing at the Furnace through this exhibit, and consider its place at Catoctin before it was ultimately used for insulation within the walls.

Shirt and Overalls	Modified Overalls	Coveralls	Girl's Dress
□	□	□	□

Blouse

Vest

6' ↑ ↓ → ← ↖ ↗

13'

Discovery EAC/A archaeologists discover historic clothing in the eaves of the Forgemans' House in 2016. The opening text panel will be about the discovery of the clothing and will establish the overarching message of the exhibition which encourages exploration and close looking.

Daily Use Exploration of clothing items as used in the historic period, including physical modifications to clothes. Includes interpretation of the workers at Catoctin Furnace and their lives as evidenced by their clothing.

Denouement Connects clothing items on display to historic photographs featuring similar items. Allows visitors to handle historically accurate reproductions of recovered clothes. This will add a personalized and human aspect to the artifacts displayed, and allow the exhibition to culminate with a section that plays upon themes of continuity and personalization.

